

# TotalView® for Networks

## Total Network Visibility®

### Troubleshooting is Hard—TotalView Makes It Easy

There are hundreds of reasons for poor network performance and potentially, hundreds or even thousands of links, routers, and switches to check across any number of locations. While there are many tools that can help you identify a problem exists, analyzing and resolving its root-cause is difficult. TotalView bridges the gap between monitoring and resolution, telling you exactly when, where and why your problem occurred in a matter of minutes:

*“The slowness between the app server and the database server at 2:35 pm was due to jumbo frame misconfiguration on the Core2 switch trunk port.”*

Instead of spending hours, possibly days, trying to determine the root-cause of a network problem, TotalView does it for you.

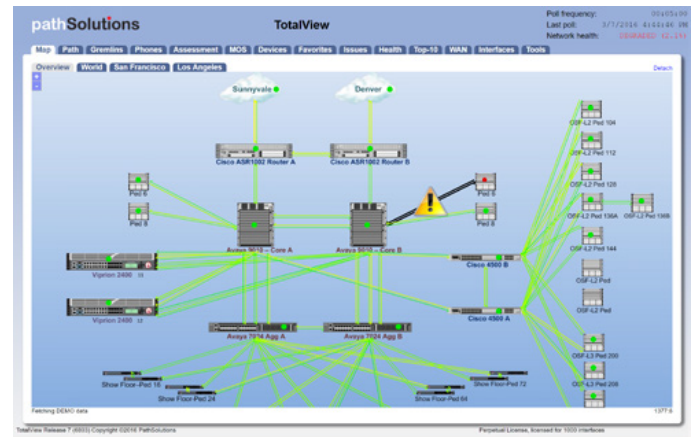
### All the Features You Need to Discover the Root-Cause of Network Problems

#### Breadth: Total Network Visibility®

Top-to-bottom views of the network—down to every device and link—for complete network visibility. Within minutes of deployment, TotalView analyzes all devices and interfaces to determine if any configuration errors or interface errors exist so you can focus on proactively fixing problems.

#### Depth: 18 Error Counters

More error counters and performance metrics analyzed than any other solution. Track errors on all network interfaces, including over-utilized interfaces, broadcast storms, incorrect speed settings, duplex mismatches, and packet loss from cabling faults, CRC errors, FCS errors, runts, giants, etc.



Dynamic Network Map

#### History: Track Problems at Any Point in Time

All historical information is collected and stored, so it's easy to see what happened 5 minutes or 5 hours ago when a problem occurred.

#### Correlation: Full Layer 1, 2, and 3 Path Mapping

Not a limited layer-3 hop analysis, but a complete mapping of every involved link, switch, and router used between any two IP endpoints to quickly isolate the involved elements used for a session. The path mapping works for north-south as well as east-west communication paths through the network, no agents required.

#### Smarts: Plain-English Prescriptions

TotalView's Network Prescription Engine™ automatically analyzes all switches and routers, identifies potential issues, diagnoses the problem, and recommends a fix in plain-English.

