

## Business Benefits

If you had a solution that produced plain-English root-cause resolutions to network issues, how would it change your business?

- Anyone in the IT organization can now be an expert troubleshooter
- Fewer tickets for the senior-level NetOps team as they can now be handled by Tier-1 Helpdesk
- Faster resolution to issues because all of the information is readily available
- Happier users due to the NetOps team knowing more about their network than ever before

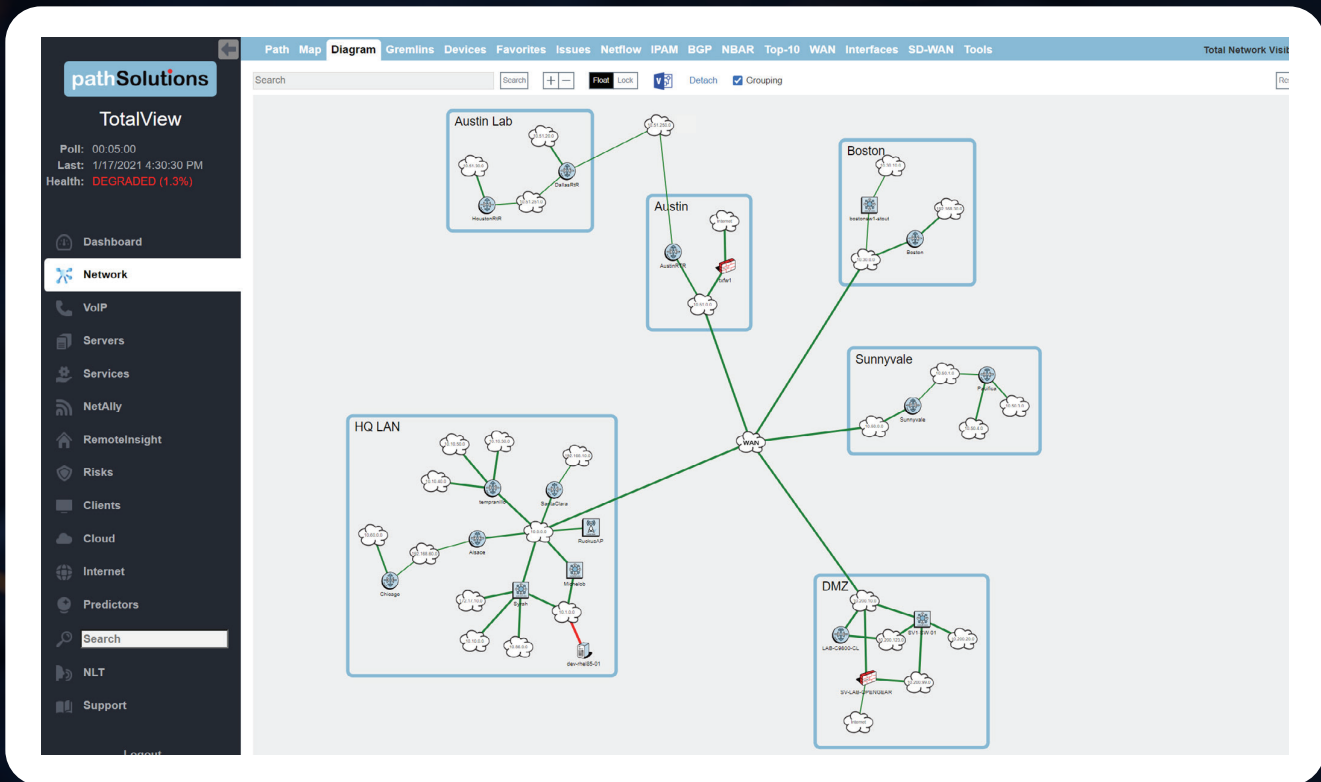
## Proactive Troubleshooting

TotalView collects and analyzes far more information than other NMS. This enables you to find and resolve network problems because you know everything your network equipment knows is broken. Solving the problem before users are even aware there is a problem shows that your NetOps team has advanced to the next level.

## Predictive Troubleshooting

Imagine if you could find and resolve issues before they even become an issue? Since TotalView has far more data, it can do some interesting tricks:

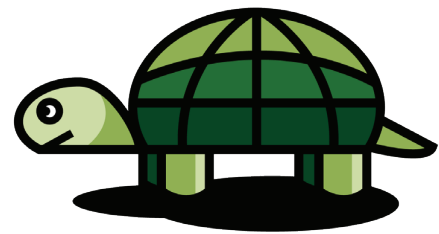
- Cabling predictor – This looks for symbol errors on the network. This is a leading indicator of where cabling faults are developing.
- Bandwidth predictor – This analyzes every interface's trend to determine when and where chokepoints will occur based on current trends.



## Total Network Visibility

TotalView shows more of the network than other systems by the fact that it automatically collects far more information:

- Broad coverage: Every interface on every network device
- Deep collection: Performance, 19 error counters, configuration, QoS, CDP/LLDP, PoE, STP on every interface
- Smart analysis: Built-in heuristics engine analyzes this information to produce plain-English answers:



Example: "The Finance2 switch interface #12 is dropping 6% of its packets due to a cabling fault"

## Features

- Total Network Visibility
- Network Diagramming
- Path Mapping
- Port Mapping
- Server Monitoring
- Event Correlation
- Network Automation
- Network Device Configuration Management
- Cloud Service Monitoring
- Network Device Inventory
- SD-WAN Monitoring
- BGP Peer Monitoring
- IPAM
- NBAR Protocol Tracking
- NetFlow
- MIB Browser
- Route Monitoring & Alerting