

PathSolutions Technote

Bug number: 1021

Product: SwitchMonitor

Revision: 3256 (v3.3)

Module: Quick Config Wizard

Severity: None

Date: November 6, 2007

Summary: How to automate the Quick Config Wizard to perform automatic nightly scans for new devices.

Details: SwitchMonitor's Quick Config wizard can be set to automatically scan for new devices on a regular basis. This is performed via Windows Scheduled Tasks, and running the Quick Config wizard in automated mode.

Deployment: The Quick Config wizard should initially be run manually to add the IP address ranges and SNMP community strings that should be scanned.

Once the default configuration is set up, the same configuration can be scanned on an automated basis via Scheduled Tasks.

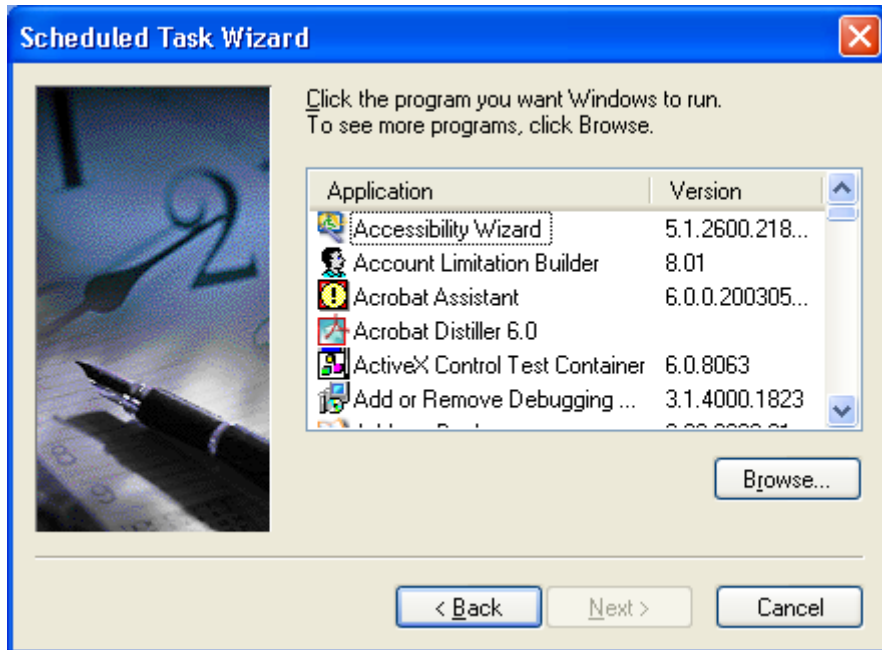
Click "Start", and then click on the Control Panel to bring up the Control Panel. Double-click on "Scheduled Tasks" to view the scheduled tasks on this computer.

Double-click on "Add scheduled task" to add a Scheduled Task :



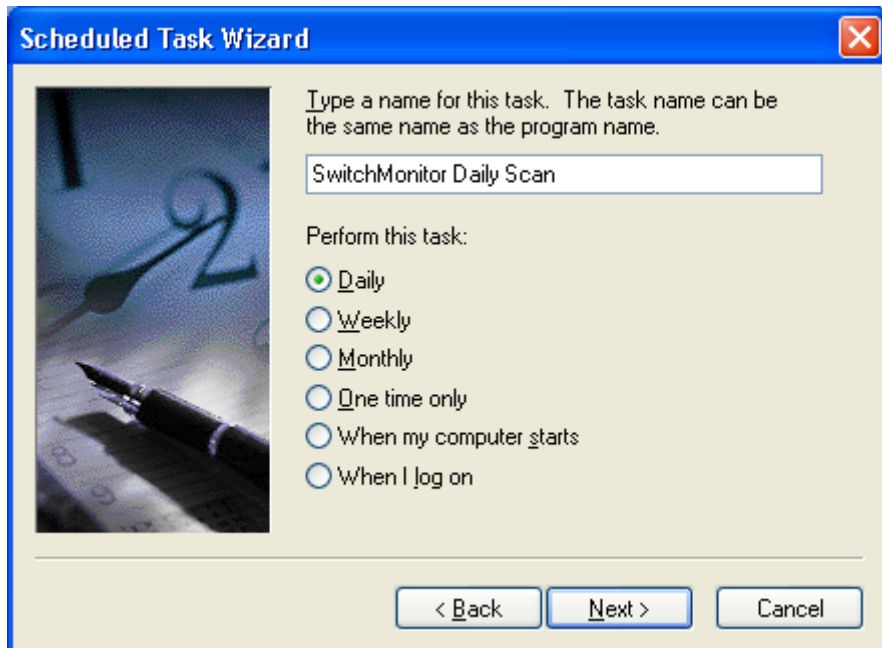
Click “Next” to continue.

You should see the following dialog:



Click “Browse” and browse to the C:\Program Files\PathSolutions\SwitchMonitor directory and select “MonitorWizard.exe”.

Enter a name for the scheduled task and choose the frequency that you want it to run:



Click “Next” to continue.

Choose the time that this task should run:



The screenshot shows the 'Scheduled Task Wizard' dialog box. On the left is a decorative image of a clock and a pen. The main text reads: 'Select the time and day you want this task to start.' Below this are three sections: 'Start time:' with a dropdown menu set to '11:00 PM'; 'Perform this task:' with three radio button options: 'Every Day' (selected), 'Weekdays', and 'Every' (with a dropdown set to '1' and the word 'days' next to it); and 'Start date:' with a dropdown menu set to '12/18/2007'. At the bottom are three buttons: '< Back', 'Next >', and 'Cancel'.

Enter the login credentials for the user that should run this task. The login credentials should have local admin equivalence on this computer to insure that the configuration can be modified and the service stopped and re-started:



The screenshot shows the 'Scheduled Task Wizard' dialog box. On the left is the same decorative image of a clock and a pen. The main text reads: 'Enter the name and password of a user. The task will run as if it were started by that user.' Below this are three input fields: 'Enter the user name:' with the text 'GARFIELD\Administrator'; 'Enter the password:' with a field of seven dots; and 'Confirm password:' with a field of seven dots. Below the input fields is a warning: 'If a password is not entered, scheduled tasks might not run.' At the bottom are three buttons: '< Back', 'Next >', and 'Cancel'.

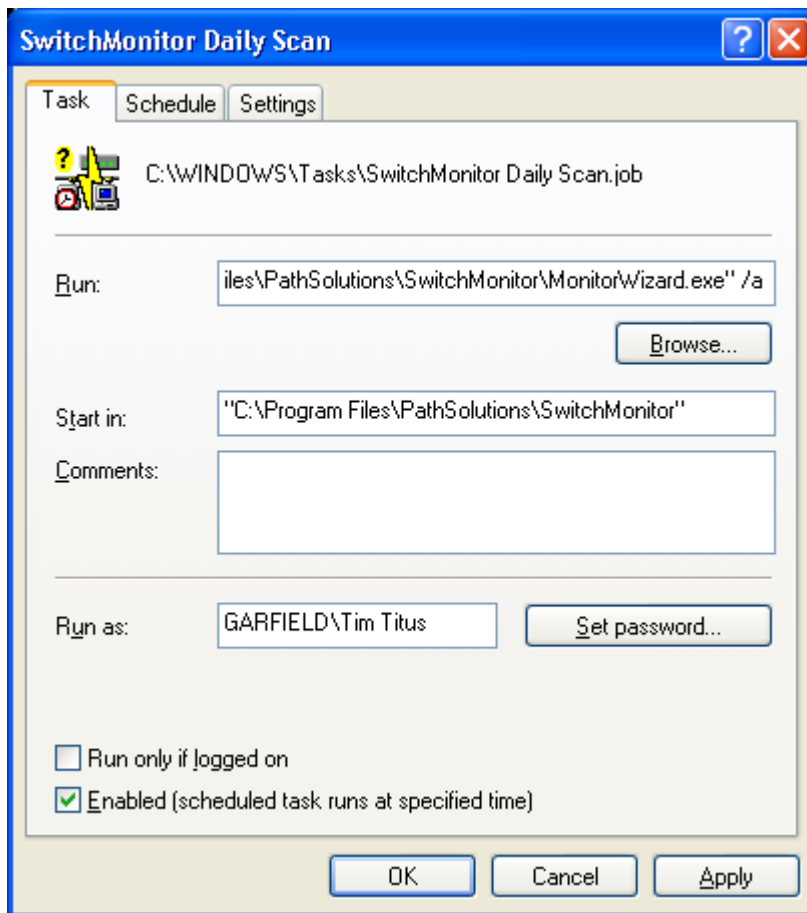
Click "Next" to continue.

You should see the completion dialog:



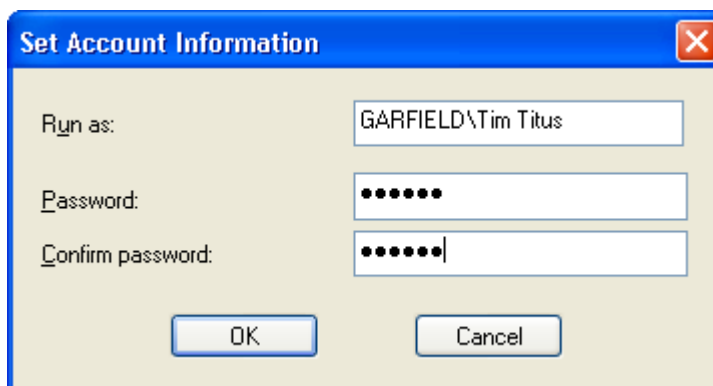
Check the box "Open Advanced Properties" and click "Finish" to continue.

You should see the advanced task properties dialog:



Enter a <space> then "/a" after the last quote in the "Run" field. This will tell the wizard to run in automated mode and not ask for user input.

When you click "Apply", it will ask you to re-enter the credentials information to make this change:



The scheduled task will run automatically, and any new discovered devices will be added to monitoring.